

1. Introduction

The licensing system based on the *Cryptlex* service was implemented in MySurvey in summer 2022, starting with *MySurvey* version 1.7.8.4, while retaining the current system based on the *License4J* system.

MySurvey automatically detects the system to be used, based on the activation code supplied by the user.

The *Cryptlex* system offers several advantages over the *License4J* system:

- Modern mechanism with regular maintenance, comprehensive documentation and responsive support.
- Licenses are adjusted on the portal in near real time on user workstations (modification of validity period, number of activations, etc.).
- Floating licenses available
- On-premises server version in customer infrastructure
- Tests carried out with customers whose infrastructure was blocking the *License4J* system showed that *Cryptlex* was technically possible and was not -in fact- blocked by current security regulations.

2. "Node Locked" licenses

2.1. Activation of "node-locked" licenses

When a license is created, a number of activations is allocated to the license based on the number of workstations expected to be able to use the solution simultaneously with the same license.

A "node-locked" license activation is linked to a machine on which the code has been activated, and will only be released with an action by the user or administrator with access to the license management portal.

Activation is required the first time the application is launched (or via the *MySurvey_LicenseUtility* utility) and will require the user to enter the activation code provided.

Access to the Internet and *Cryptlex* license servers is essential at this stage.

If you don't have Internet access to validate your license, you can still use the offline activation mechanism: See chapter Activation without Internet access.

2.2. Waiting period

The Node-locked license has no waiting period, other than the period of validity of the license. Internet access is no longer required once the license has been activated.

3. Floating licenses

3.1. Floating license operation

When a license is created, a number of tokens is allocated to the license, depending on the number of workstations that are to use the solution simultaneously. When MySurvey is launched, depending on the license code, the CryptLex server is consulted to obtain an available token. This token is allocated to the MySurvey session and will be released at the end of the session, when the user closes the MySurvey application.

In practice, and by default to date, the token is allocated to the MySurvey session for a fixed duration, equal to **one hour**. This reservation is renewed **every 45 minutes**.

When MySurvey is closed, a request is sent to the CryptLex server, which immediately releases the token, making it available again to license users.



If MySurvey is not closed correctly (e.g. in the event of a computer or MySurvey crash), the license will be automatically released after the 60-minute reservation time has elapsed.

3.2. Floating license activation

Activation of the floating license on a workstation is required the first time the application is launched (or via the MySurvey_LicenseUtility utility) and will require the user to enter the activation code supplied (or see paragraph #7 Automatic activation code supply mechanism).

Access to the Internet and Cryptlex license servers is required for activation and subsequent use of the software.

3.3. Waiting period

There is no waiting period for a floating license. The software needs to contact the license server to obtain an available token, which is released when the software is closed.

Commenté [GV1]: We had increased the verification interval to one hour (3600s) to comply with CryptLex recommendations. The token is reserved for 3700 seconds.

Commenté [GV2]: I've updated the durations in our policy

4. Release an activation or license token manually

Whether for a "floating" or "node-locked" license, it is possible to force immediate release of the token or activation via the license menu available in the MySurvey software or the MySurvey_LicenseUtility utility.

In MySurvey, this option is available under the **Help** menu, then **License**.

Click on the "**deactivate via internet**" or "**free token**" button

This will immediately release the token or license activation, making it available to another user.

In MySurvey, this action closes the software immediately after the token is released.



License activations can also be managed through the Cryptlex license management web portal:

5. License management via web portal

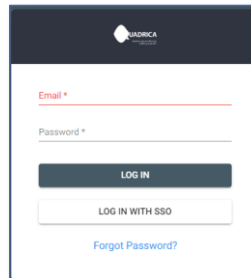
To check the status of your licenses or manage their activation, you can log in using the login details provided when you obtained your license, on the following website: <https://licenses.quadrica.fr/>


On first login, if you don't have a password, you'll need to enter your e-mail address and click on "**Forgot Password?**"

Here you'll find your license keys, the number of active or available activations, and the license expiry date.

You will be able to deactivate a license remotely, for example for a workstation that no longer exists but has retained a license activation.

It is also possible to activate or deactivate an "offline" license, for a workstation where Internet access is not possible. -> **Description of the procedure to be drawn up**



Key	Product	Validity	Activations	Deactivations	Status	Expiration Date	Creation Date ↓
 License Key	MySurvey	365 Days	0/1 Activations	0/0	Active	Feb 20, 2024 9:29 AM	Feb 17, 2023 10:01 AM



For more details, see: [User_Guide_CryptLex_Web.docx](#)

6. Firewall permissions

When you start the application and provide your license activation code, the Cryptlex server is consulted to validate the license.

IP addresses for the Cryptlex service must be accessible from your network and may need to be whitelisted to exit through your firewall.

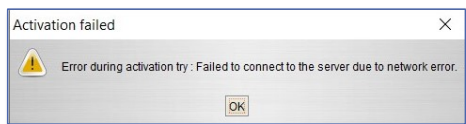
IP1: **52.223.22.71**

IP2: **35.71.188.31**

Alternatively, in the absence of an IP address, the URL of the Cryptlex Web API can be whitelisted:

<https://api.cryptlex.com:443>

A problem accessing the Cryptlex activation servers will produce these error messages:



7. Automatic license activation code delivery mechanism

To avoid each MySurvey user having to enter the initial activation code for the license, the solution administrator can configure MySurvey so that the activation code is automatically communicated and validated on launch. This feature applies to "floating" licenses and "node-locked" license.

The activation code can be supplied in 2 ways:

- **Command line argument:**

- In the command line, add the keyword **-license** (or **-licence**) followed by the activation code made up of 6 groups of 6 characters. If the software is located in `\Software\MySurvey\`:

```
\Software\MySurvey\MySurvey.exe -license XXXXXX-XXXXXX-XXXXXX-XXXXXX-XXXXXX
```

- **In a file next to the executable file:**

- In the **PROGRAMDATA** folder next to the **MySurvey.exe** and **MySurvey_Network.exe** executables, create a text file named **activation.lic**, containing only the activation code. Each time the software is run, the activation code contained in this file will be used to allocate a token available on the user workstation.

Commenté [GV3]: Yes, it's a typo, it should be licensed.

Commenté [GV4]: The currently recognized keywords are "-license" and "licence".

8. Installation of a license server on the client infrastructure

Procedure under evaluation.